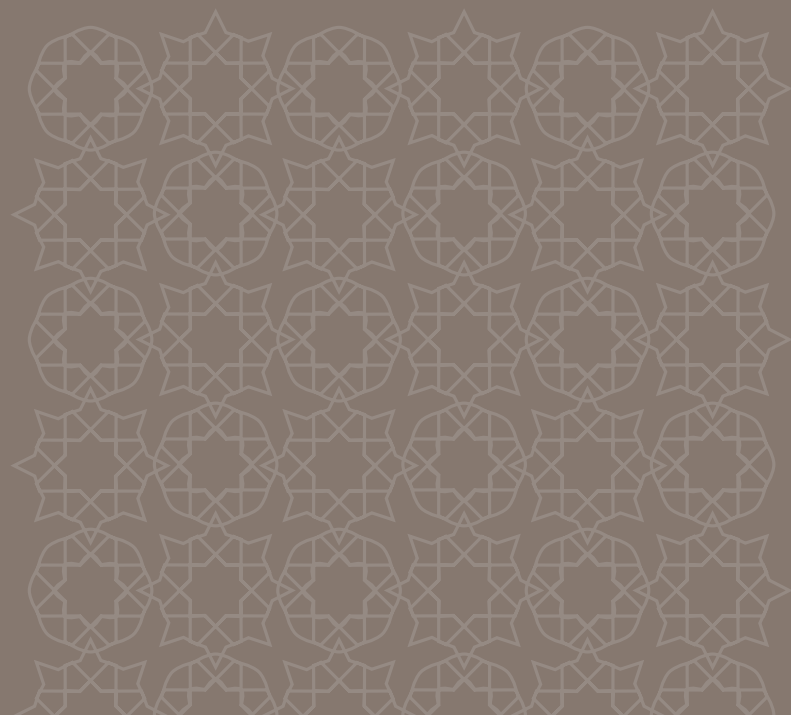
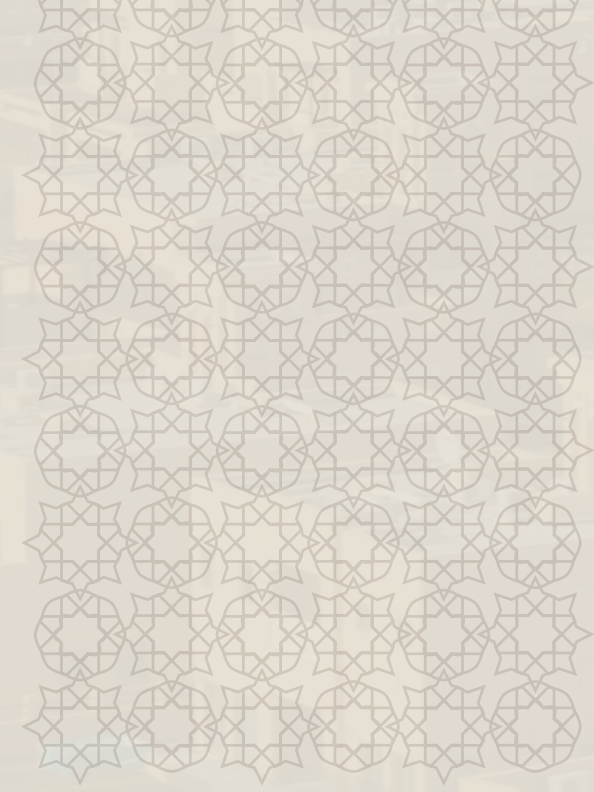




al furjan







## Al Furjan

Al Furjan is a vibrant neighbourhood that celebrates the true spirit of community. Inspired urban planning has created a distinguished residential district of exceptional four-bedroom villas and three-bedroom townhouses with distinctive and functional features designed for a comfortable lifestyle.

Al Furjan has been developed to make even simple everyday pleasures truly memorable and encourage a more social way of life. Community centres - Al Furjan Pavilion and Al Furjan West Pavilion - feature a range of amenities including a swimming pool, sports courts, cafés and restaurants as well as retail facilities.

Located in close proximity to Ibn Battuta Mall and the Expo 2020 site, the 560-hectare community is easily accessible from Sheikh Zayed Road, Sheikh Mohammed Bin Zayed Road and Al Yalays Road. Al Furjan is one of Nakheel's most popular and fastest growing communities.







## Villa and Townhouse Types







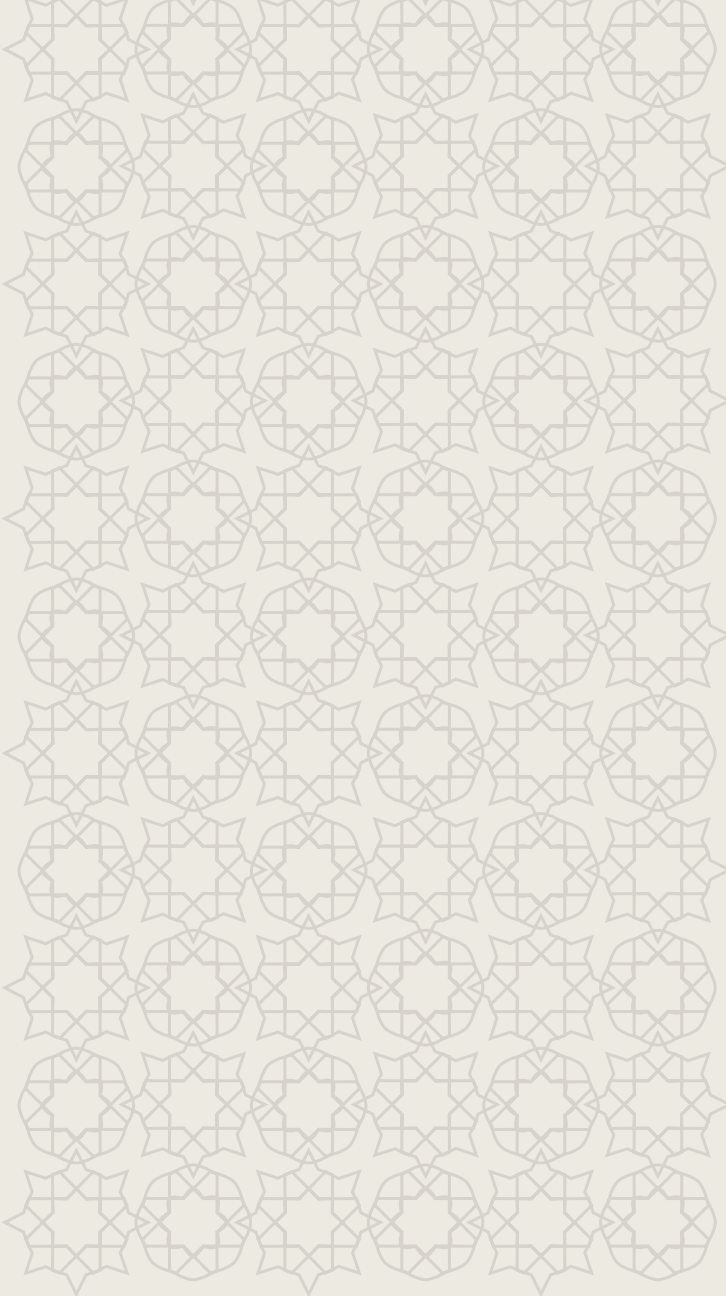
4 Bedroom Villa Type ‘A’

Gross floor area = 506.06 sq.m (5,447.18 sq.ft)  
Total terrace = 151.05 sq.m (1,625.89 sq.ft)  
Accessible terraces: 3  
Individual plot size: 600 sq.m (6,458 sq.ft)

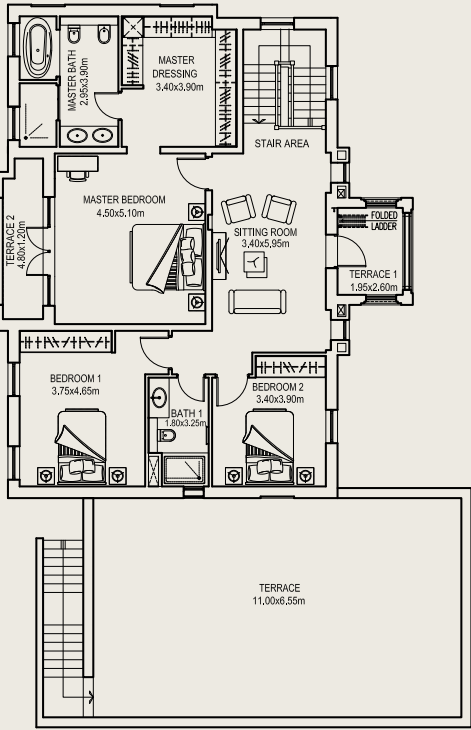


4 Bedroom Villa Type ‘B’

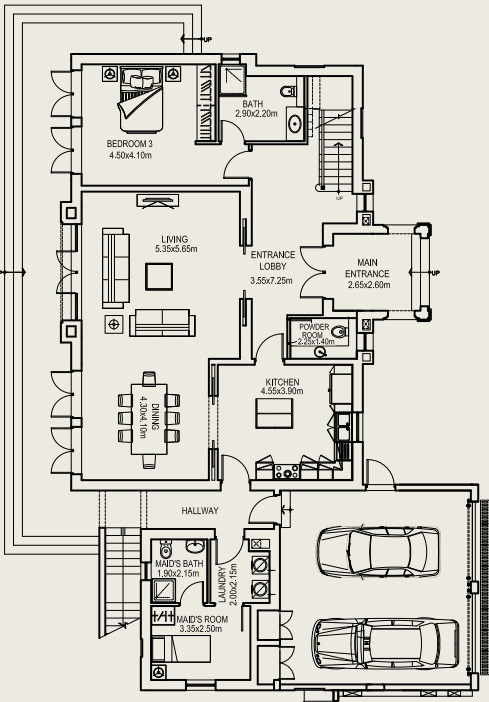
Gross floor area = 455.2 sq.m (4,900 sq.ft)  
Total terrace = 110.01 sq.m (1,184.14 sq.ft)  
Accessible terraces: 3  
Individual plot size: 600 sq.m (6,458 sq.ft)



First Floor Plan

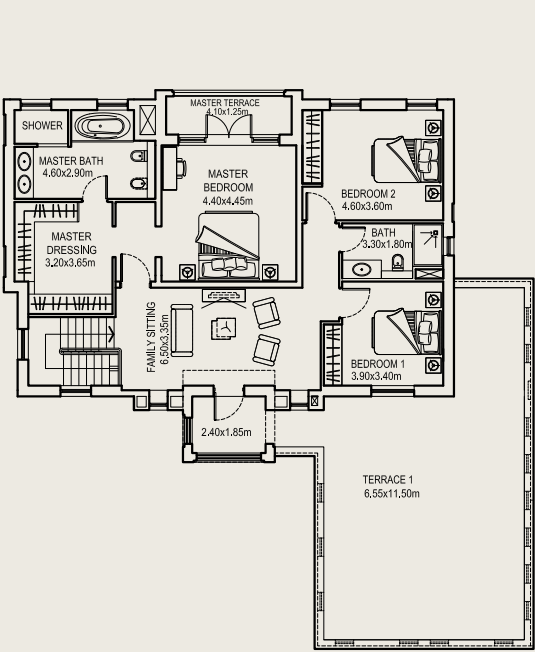


Ground Floor Plan

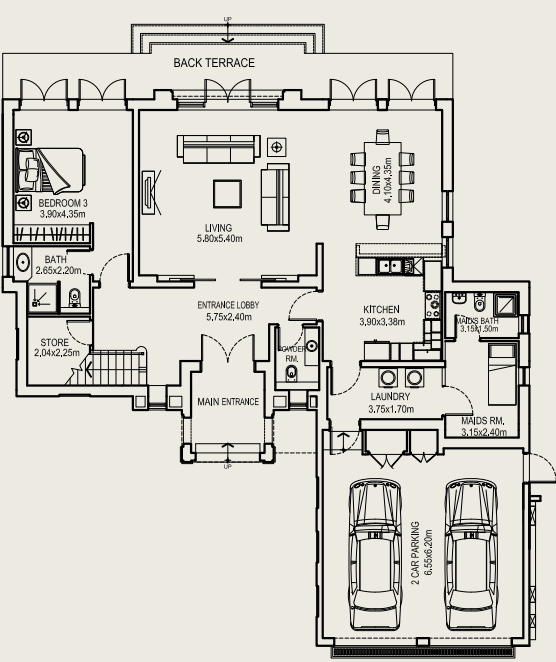


Floor plan: Numbers, square footage and floor plans are approximate.  
Final dimensions, square footage and floor plans may vary.

First Floor Plan



Ground Floor Plan



Floor plan: Numbers, square footage and floor plans are approximate.  
Final dimensions, square footage and floor plans may vary.

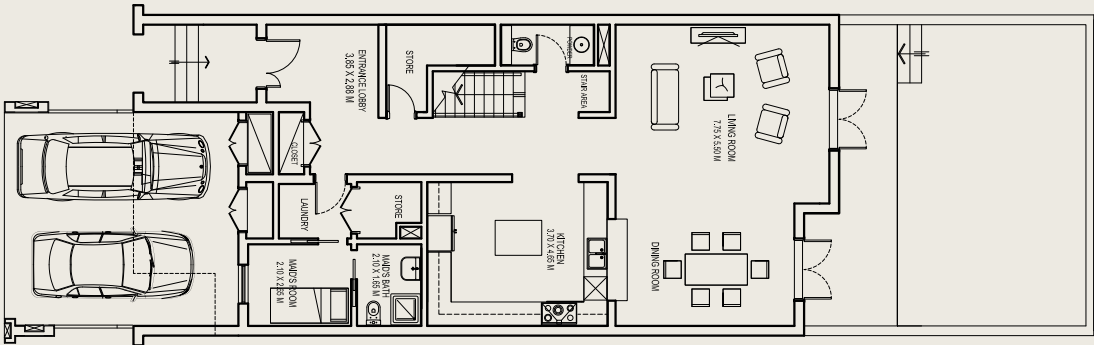




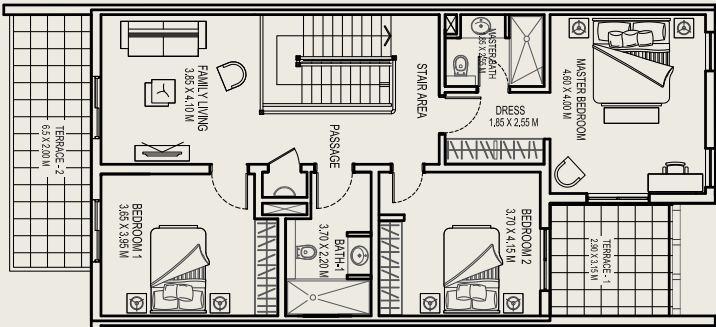
### 3 Bedroom Townhouse (Middle)

Gross floor area = 301.21 sq.m (3,242.20 sq.ft)  
Total terrace = 65.79 sq.m (708.16 sq.ft)  
Accessible terraces: 2  
Individual plot size: 224 sq.m (2,411 sq.ft)

Ground Floor Plan



First Floor Plan



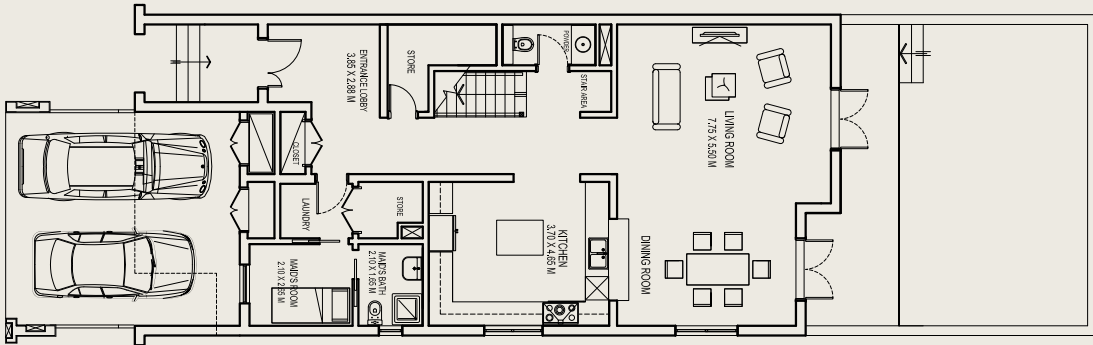
Floor plan: Numbers, square footage and floor plans are approximate. Final dimensions, square footage and floor plans may vary.



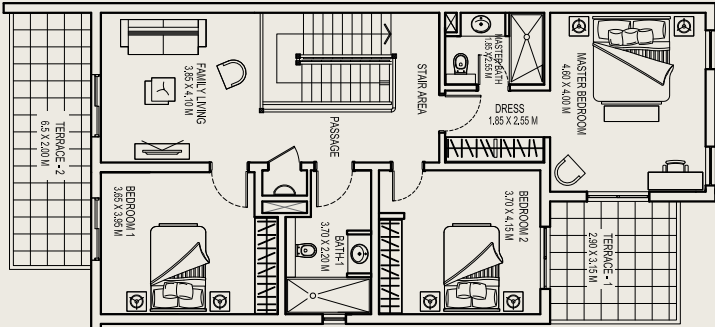
### 3 Bedroom Townhouse (Corner)

Gross floor area = 301.21 sq.m (3,242.20 sq.ft)  
Total terrace = 65.79 sq.m (708.16 sq.ft)  
Accessible terraces: 2  
Individual plot size: 224 sq.m (2,411 sq.ft)

Ground Floor Plan



First Floor Plan



Floor plan: Numbers, square footage and floor plans are approximate. Final dimensions, square footage and floor plans may vary.



# Property Features

The Quortaj villas and townhouses combine an eclectic mix of colours and textures that showcase attention to detail and rich architectural elements. Tiered, green tile roofs and embellished white panels are accentuated by unique Quortaj arch designs.

The exceptional homes in Al Furjan have been carefully designed to satisfy every practical need with all modern comforts, offering spaces that are both functional and inspired. Specially selected modern interior styling provides homeowners with finishes that best suit their tastes.

## Finishes

### Main entrance and living area features

- Main entrance floor design in porcelain tiles
- Wooden doors
- Stair steps finished in stone

### Powder room

- Ceramic floor and wall tiles
- Wooden doors with semi-solid veneered finish
- Feature wall lights

### Kitchen features

- Ceramic floor tiles
- Wooden cabinets with stone counters

### Bathroom features

- Bathroom accessories
- Sanitary ware fixtures
- Stone counters and feature mosaics
- Bathtub or built-in shower
- Ceramic floor and wall tiles
- Decorative wall lights in master bathroom

### Bedroom features

- Ceramic floor tiles
- Built-in wardrobes

## Description

- Architectural style: Quortaj
- Modern interior finishing

## Community Amenities

- Community retail centres - Al Furjan Pavilion and Al Furjan West Pavilion - feature a swimming pool, restaurant, sports court, gym and mosque
- Landscaped gardens
- Convenient access to public transportation
- Easy accessibility to Dubai's business districts and major tourist attractions



The developer reserves the right to make revisions. All the measurements and drawings are approximate. This information is subject to change without notice. Do not scale drawings. Artistic renderings, landscaping and images are for illustrative purposes only and are subject to change without notice. August 2017.